

RESTITUTION SCIENTIFIQUE

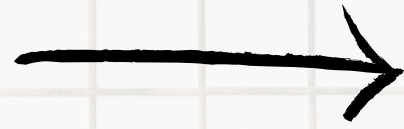
ANALYSE DE L'EAU DE L'ALAGNON

05 JUILLET 2024

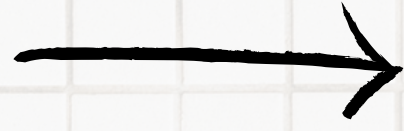


PRÉLÈVEMENTS :

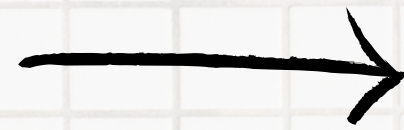
FONT



GORGES



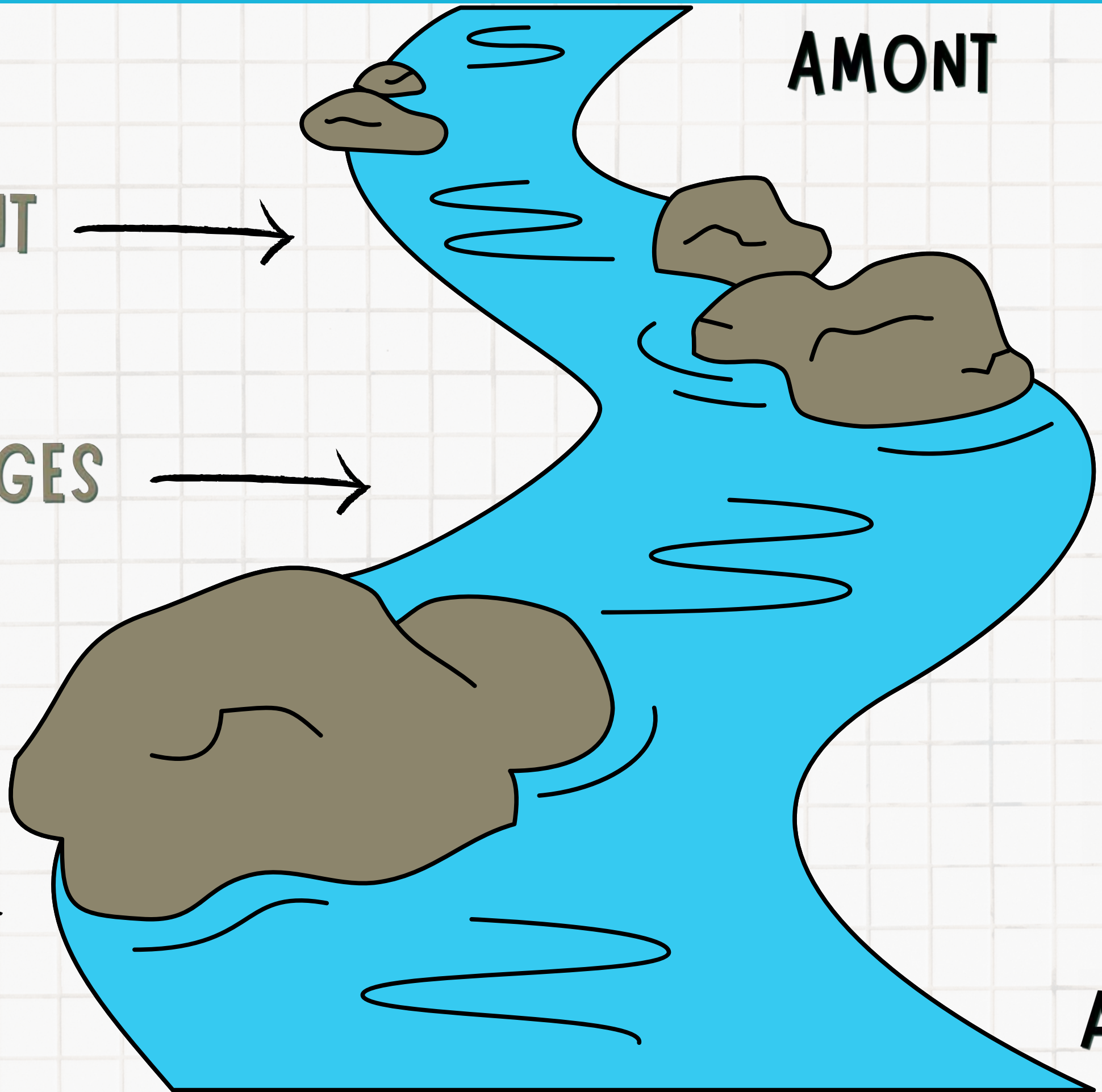
CAMPING



AMONT

AVAL

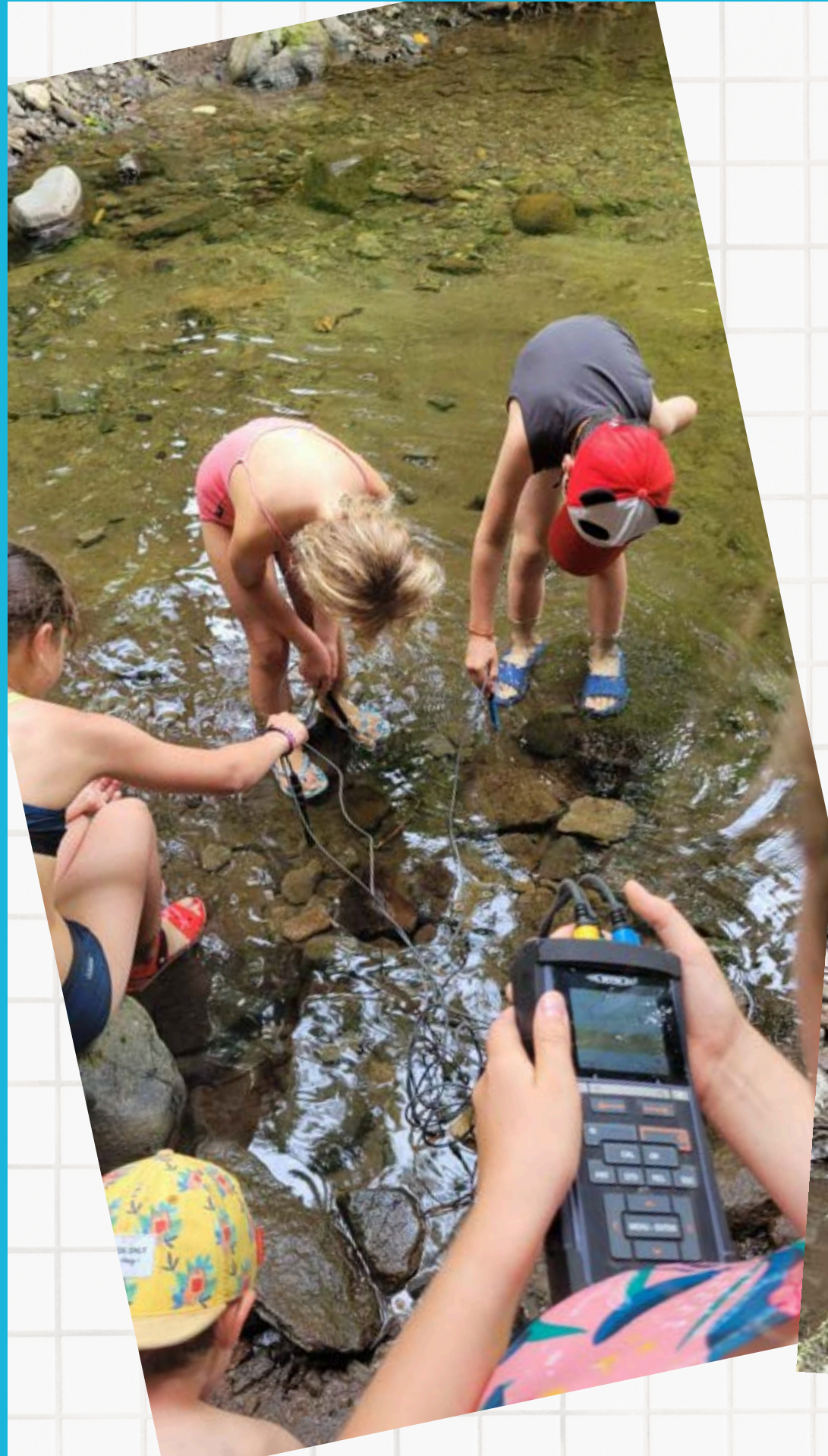
RIVIÈRE DE L'ALAGNON



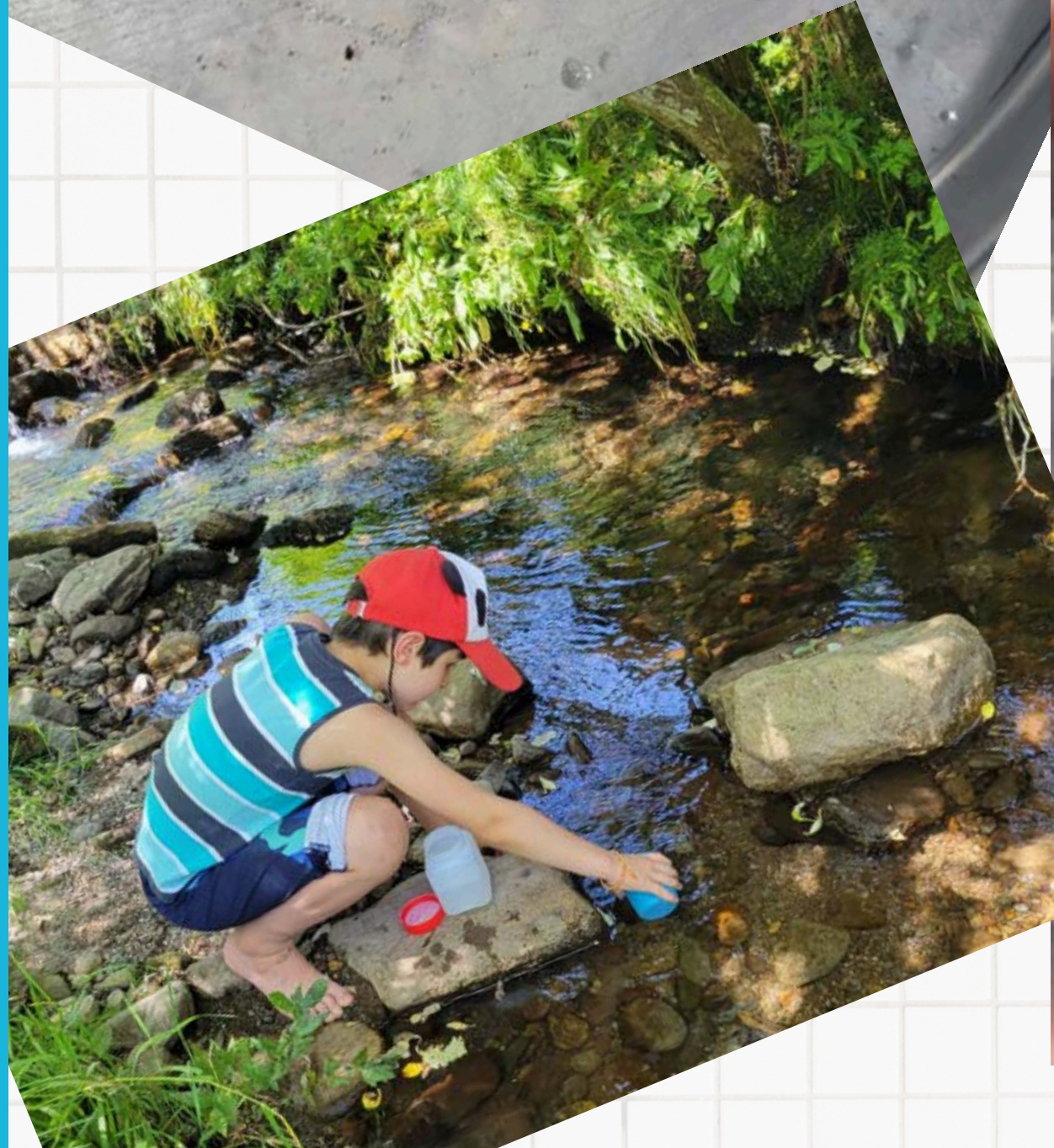
CAMPING DE MURAT

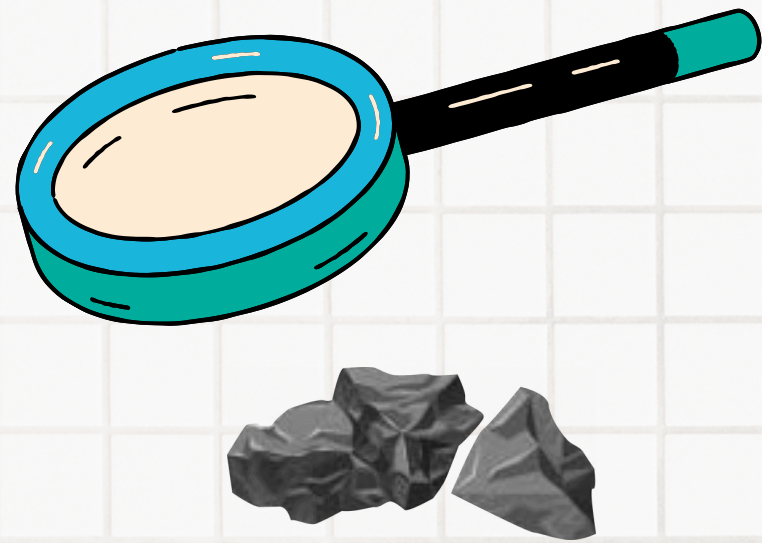


GORGES DE L'ALAGNON



FONT DE L'ALAGNON





RÉSULTATS ET CONCLUSIONS:

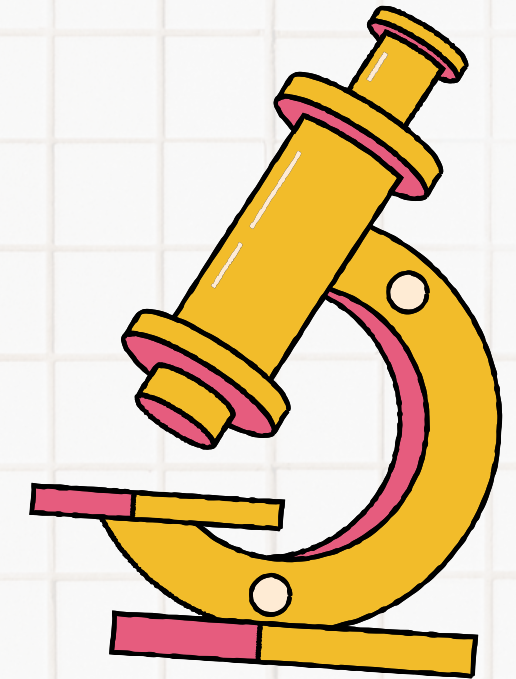
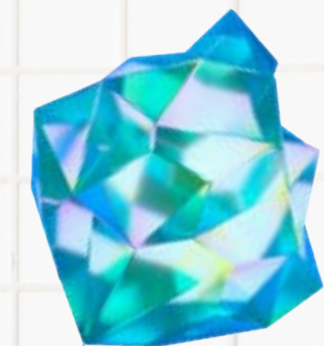
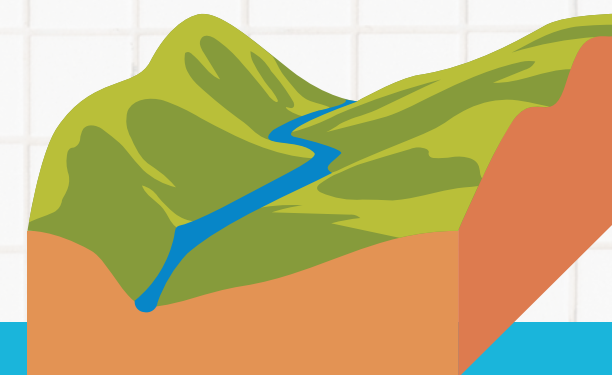
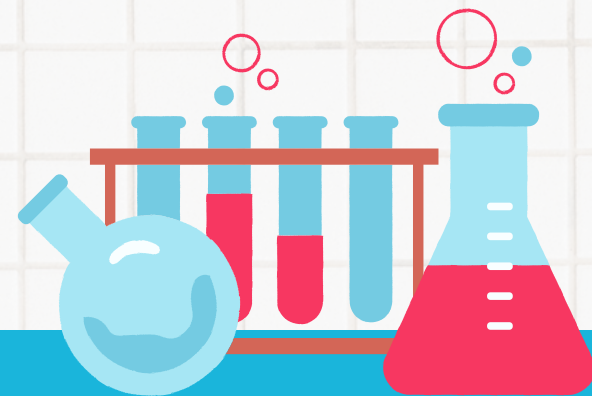
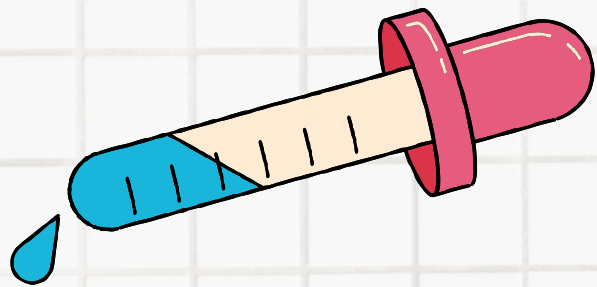
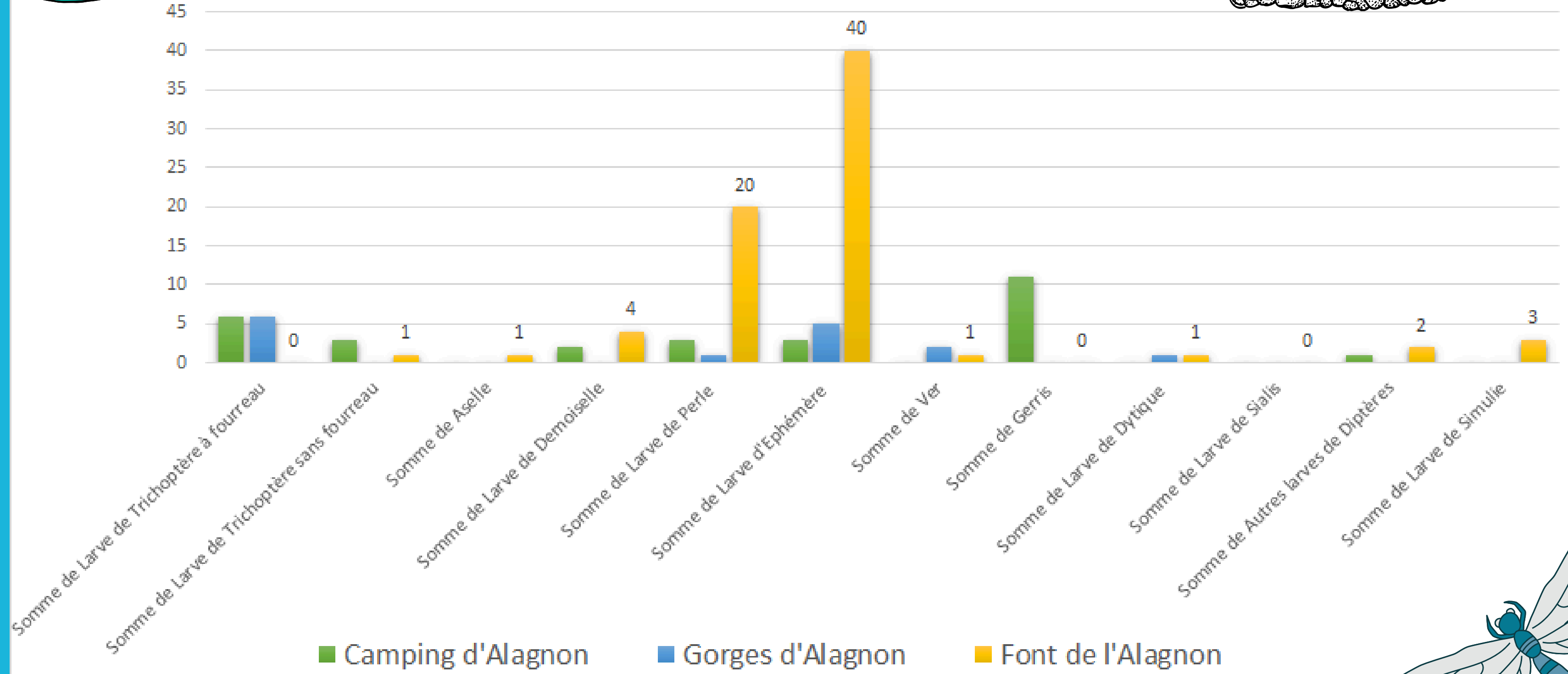
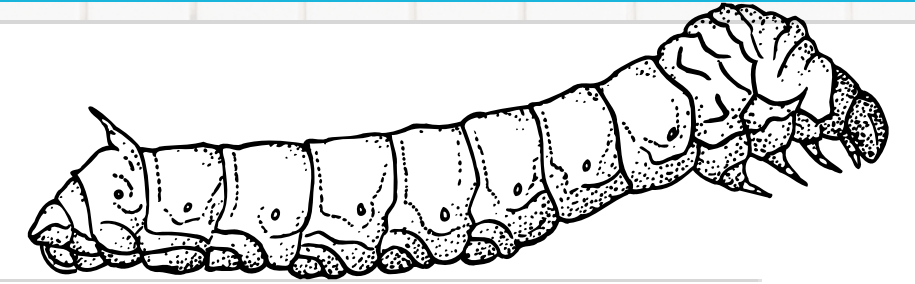
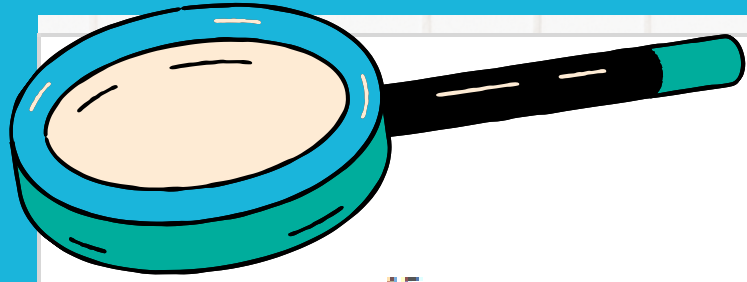


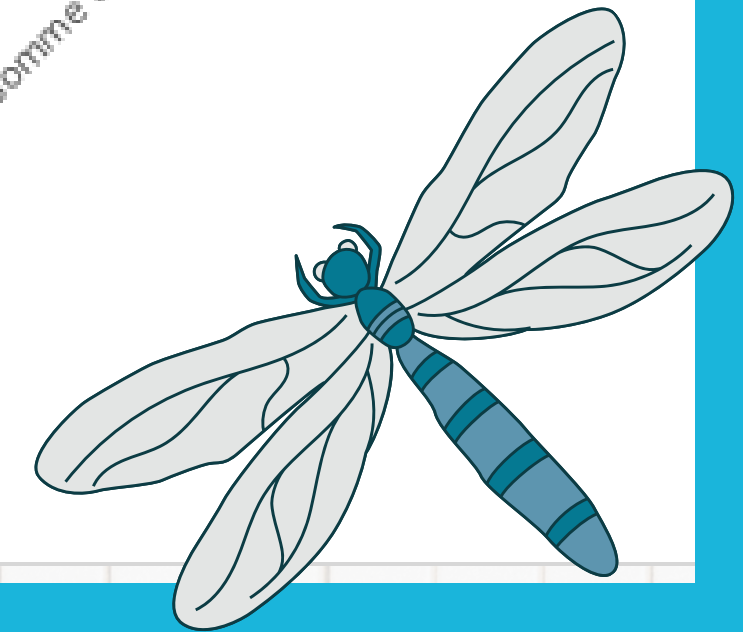
TABLEAU ANALYSE CHIMIQUE DE L'EAU - 29,30 et 31 Juillet 2024

N°	Lieu / observation	Heure	Météo	T. ext °C	T. eau °C	Vitesse de l'eau (m/s)	Largeur de cours d'eau (m)	Profondeur (cm)	Débit calculé (m ³ /s)	[O ₂] mg/L	Sat O ₂ %	Conduct. electr. µS	pH	Turbidité	Qualité des berges (/20)
1	Camping de Murat	15:20	soleil	32	17	0,26	10	16,7	0,042	8,32	94,7	2,8	7,1	3,01	16
2	Gorges de l'Alagnon	15:58	soleil	25,3	17,8	0,18	6,8	25	0,045	8,4	98,1	2,1	7,3	2,05	20
3	Font de l'Alagnon	14:48	soleil	31,6	16,4	0,15	2,85	18	0,027	8,2	96,3	1,4	7,6	1,84	19



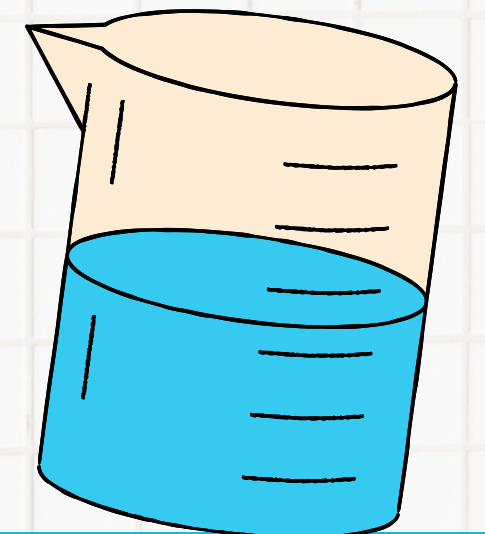
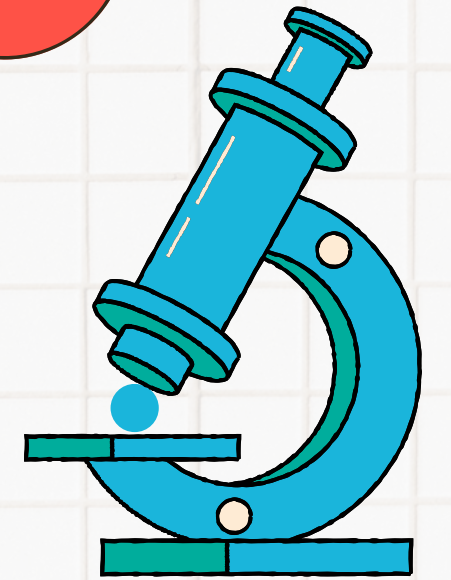
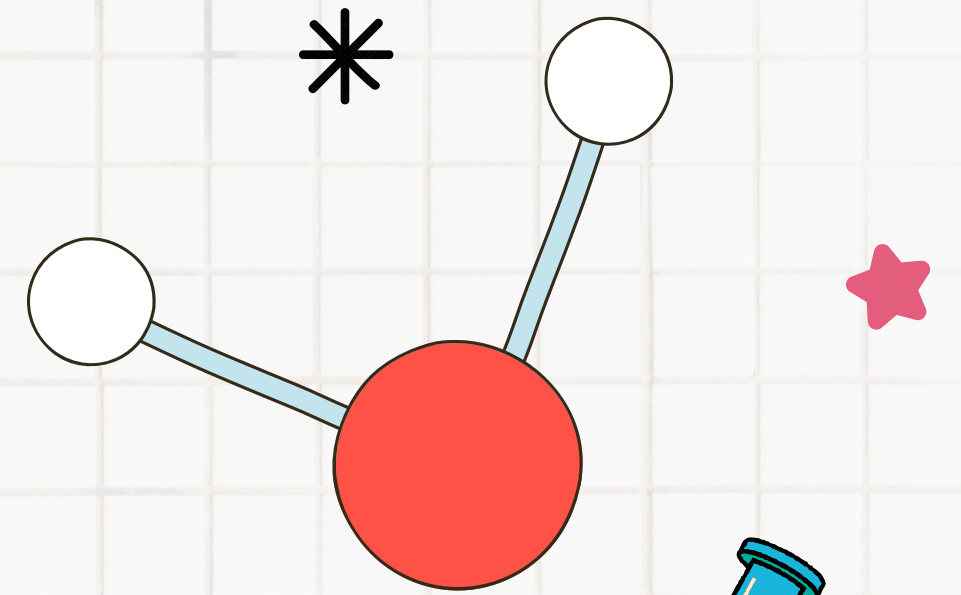
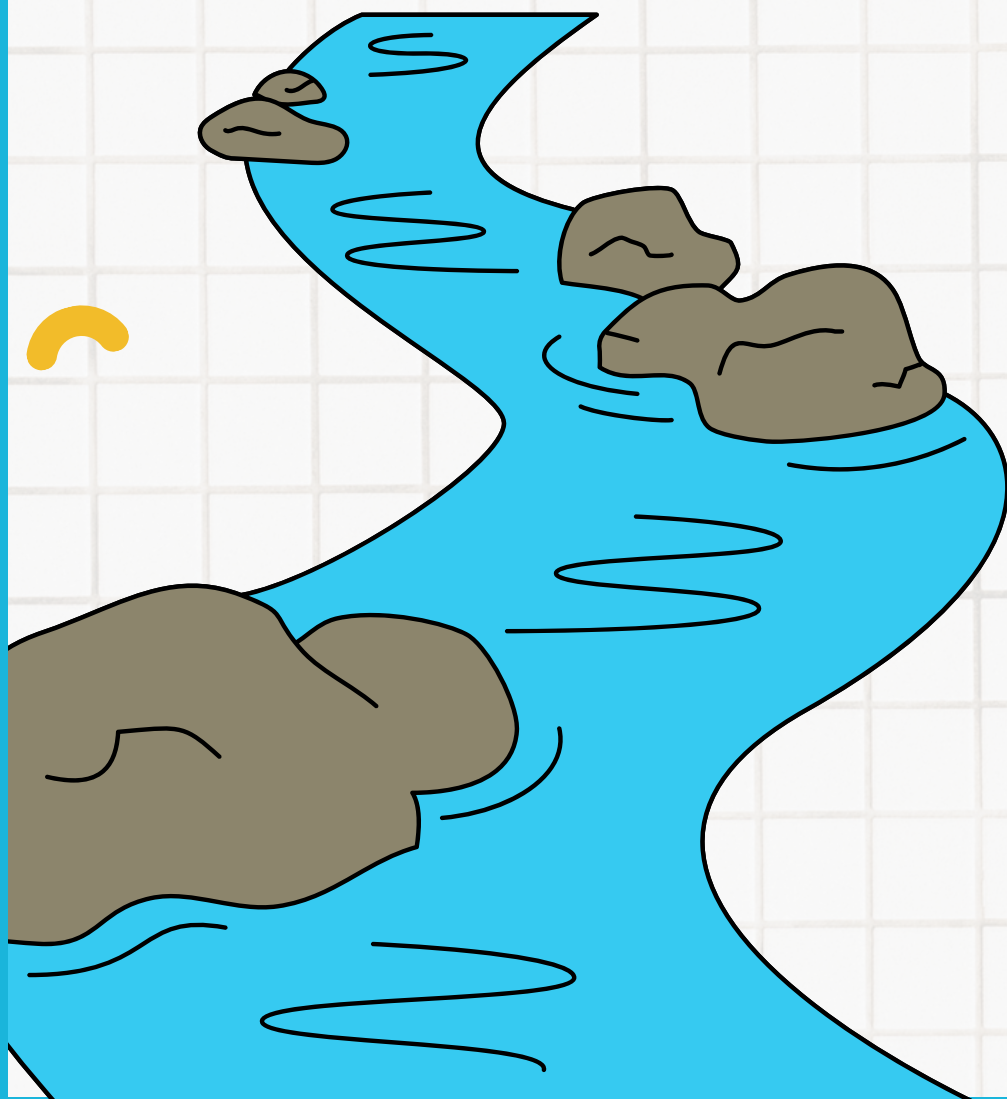
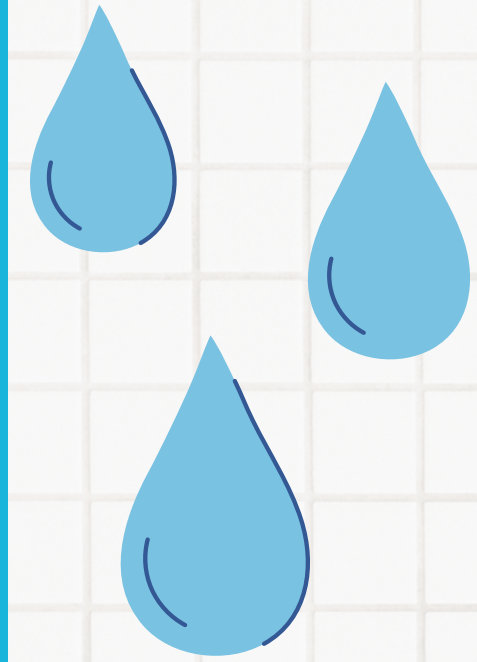


Valeurs



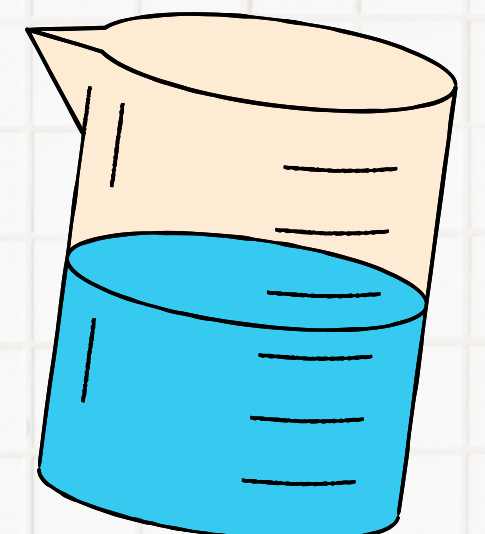
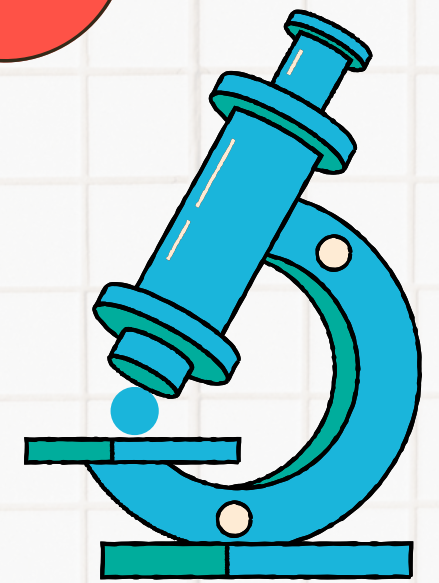
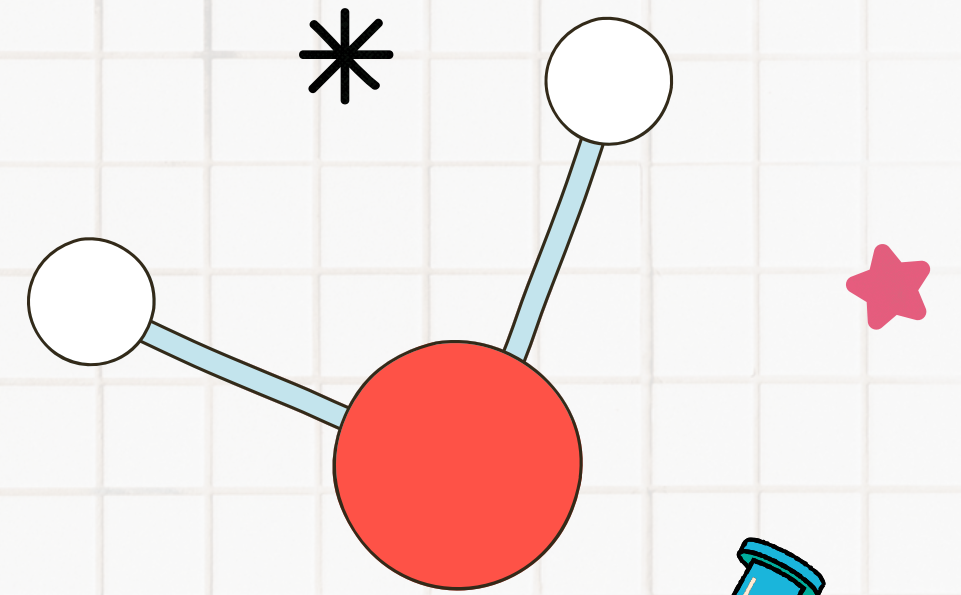
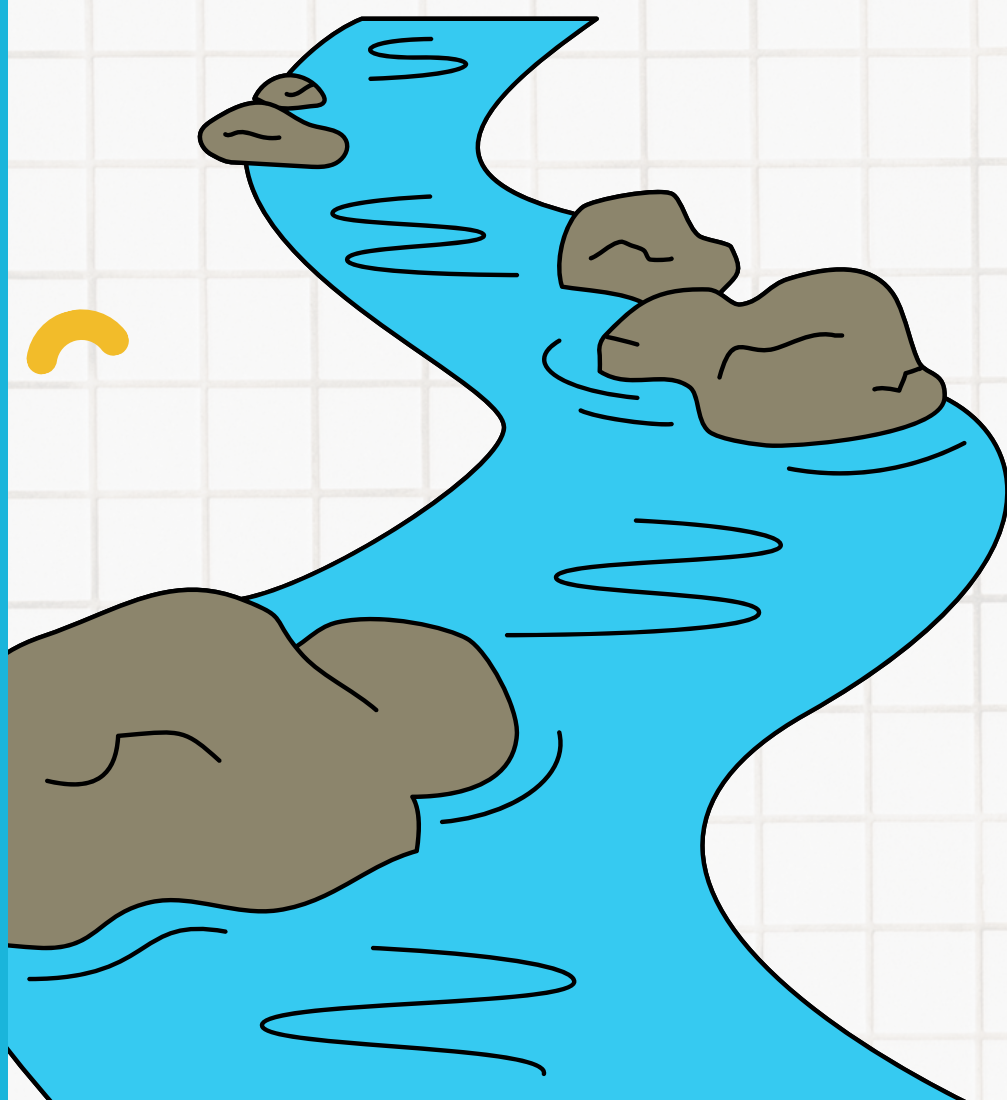
VITESSE DE L'EAU

L'eau coule plus vite en aval (camping) qu'en amont (font de l'alagnon).



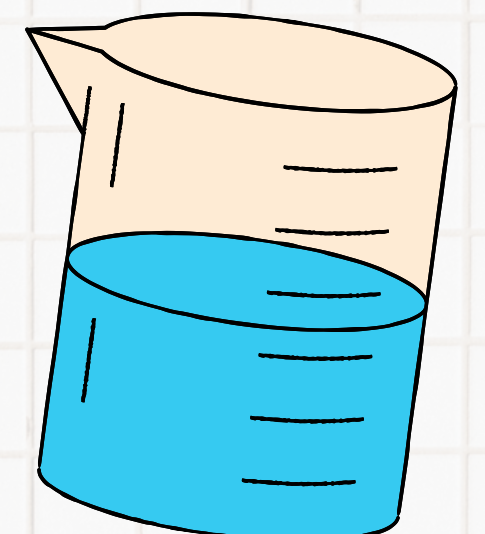
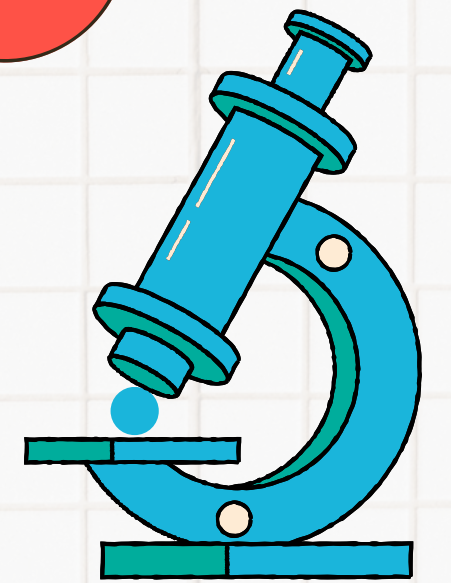
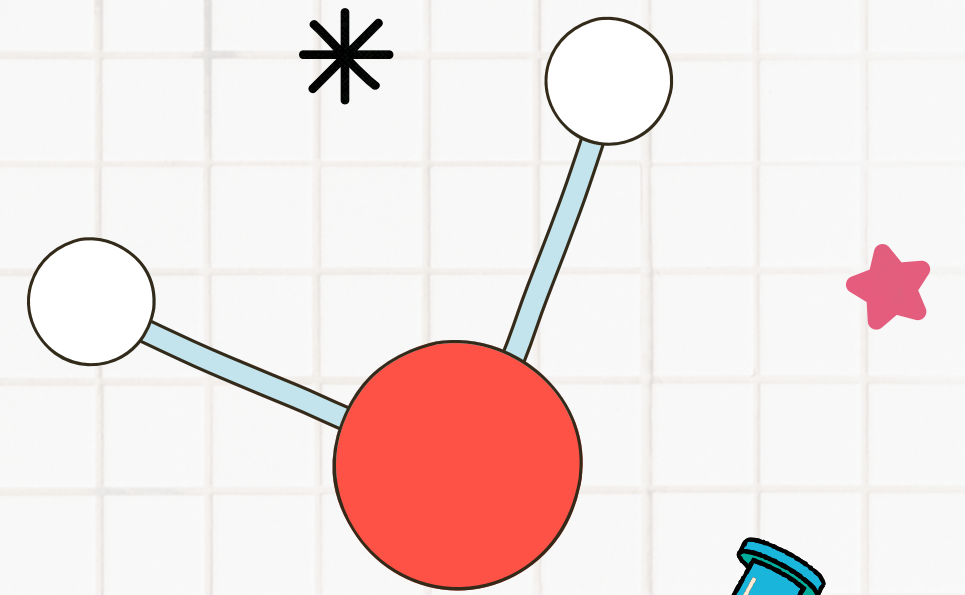
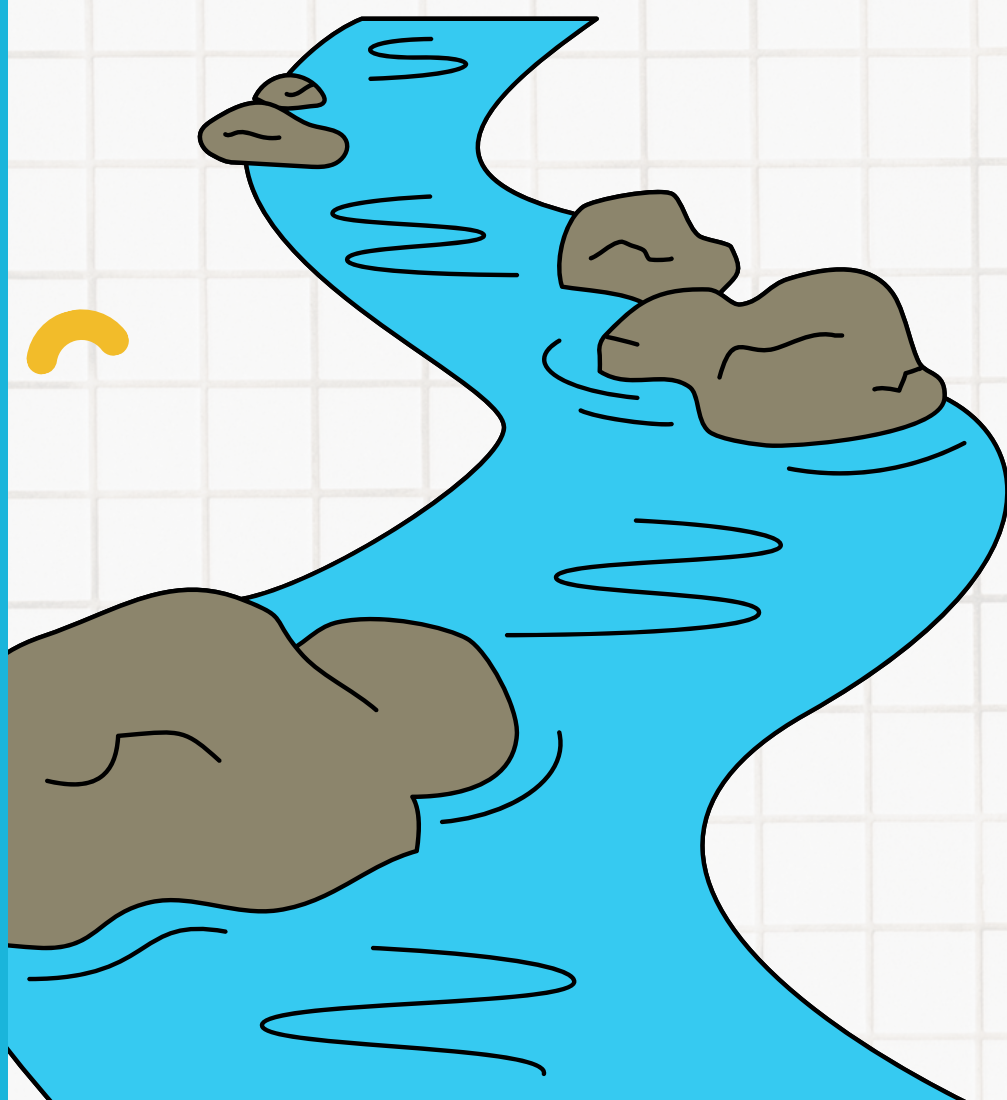
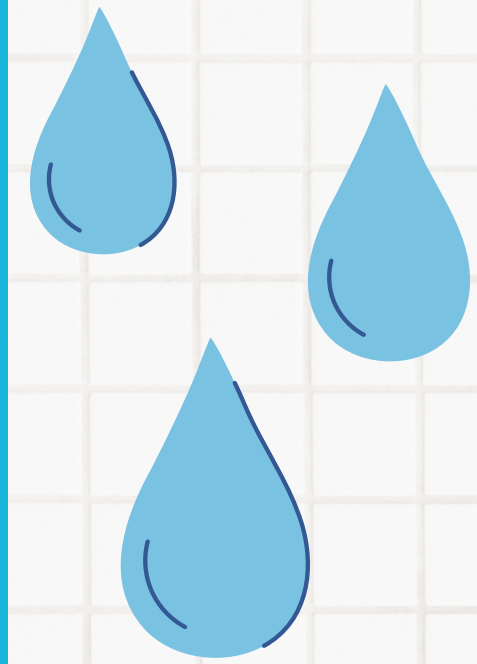
LARGEUR DU COURS D'EAU

La largeur du cours d'eau augmente vers l'aval.



DÉBIT CALCULÉ

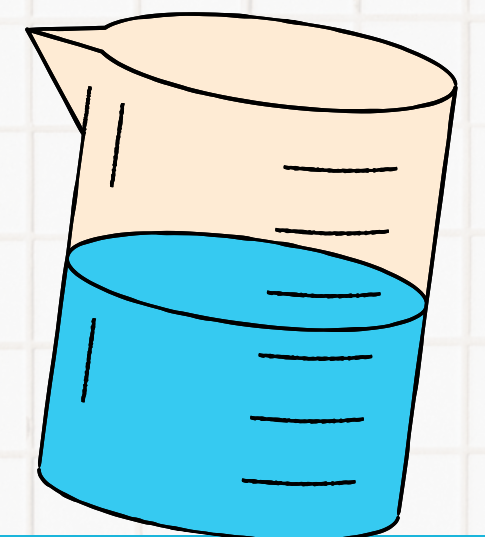
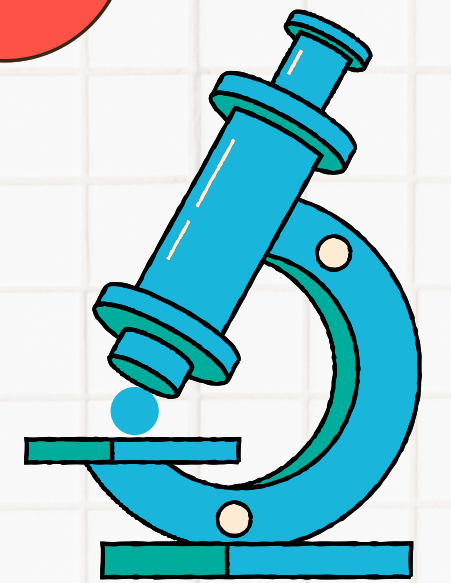
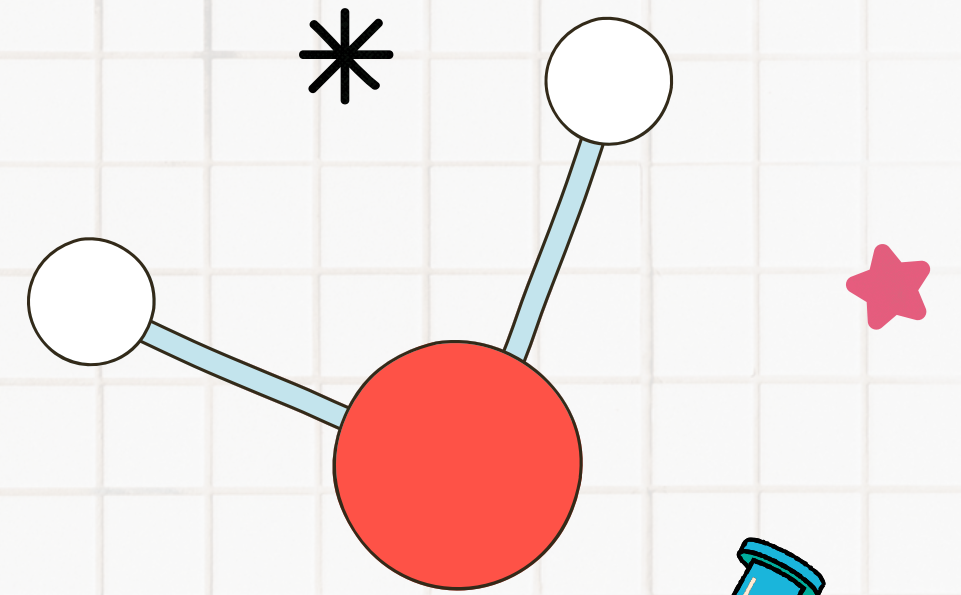
Le débit (vitesse par largeur)
de l'eau est plus faible en
amont.



CONDUCTIVITÉ

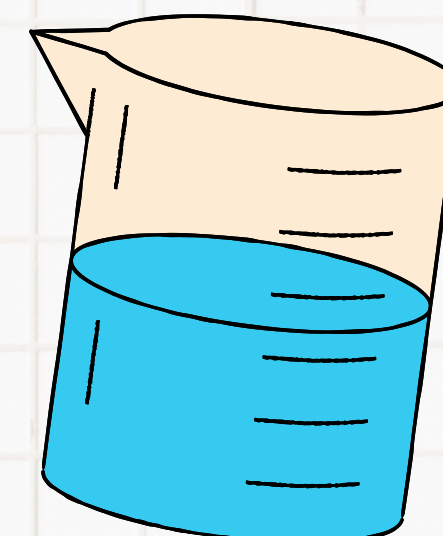
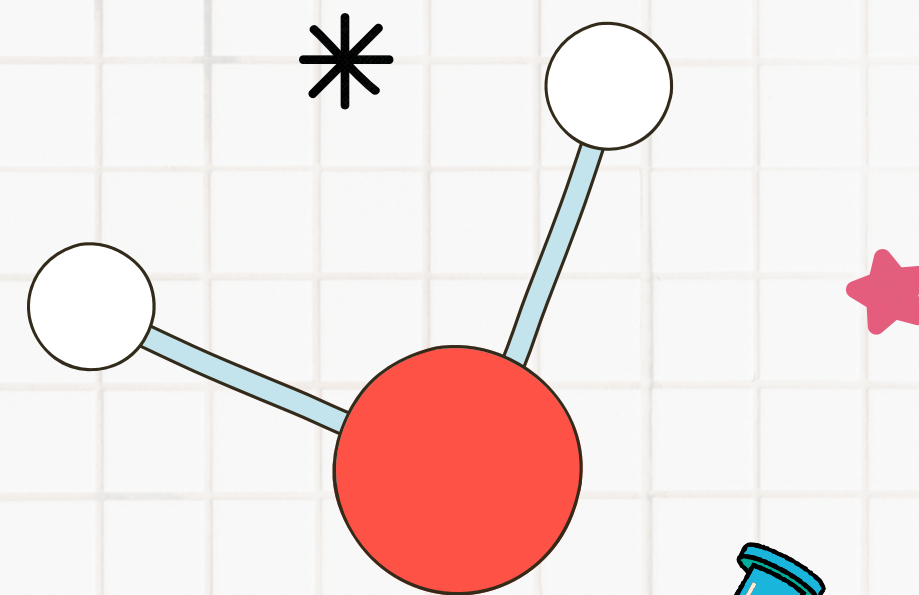
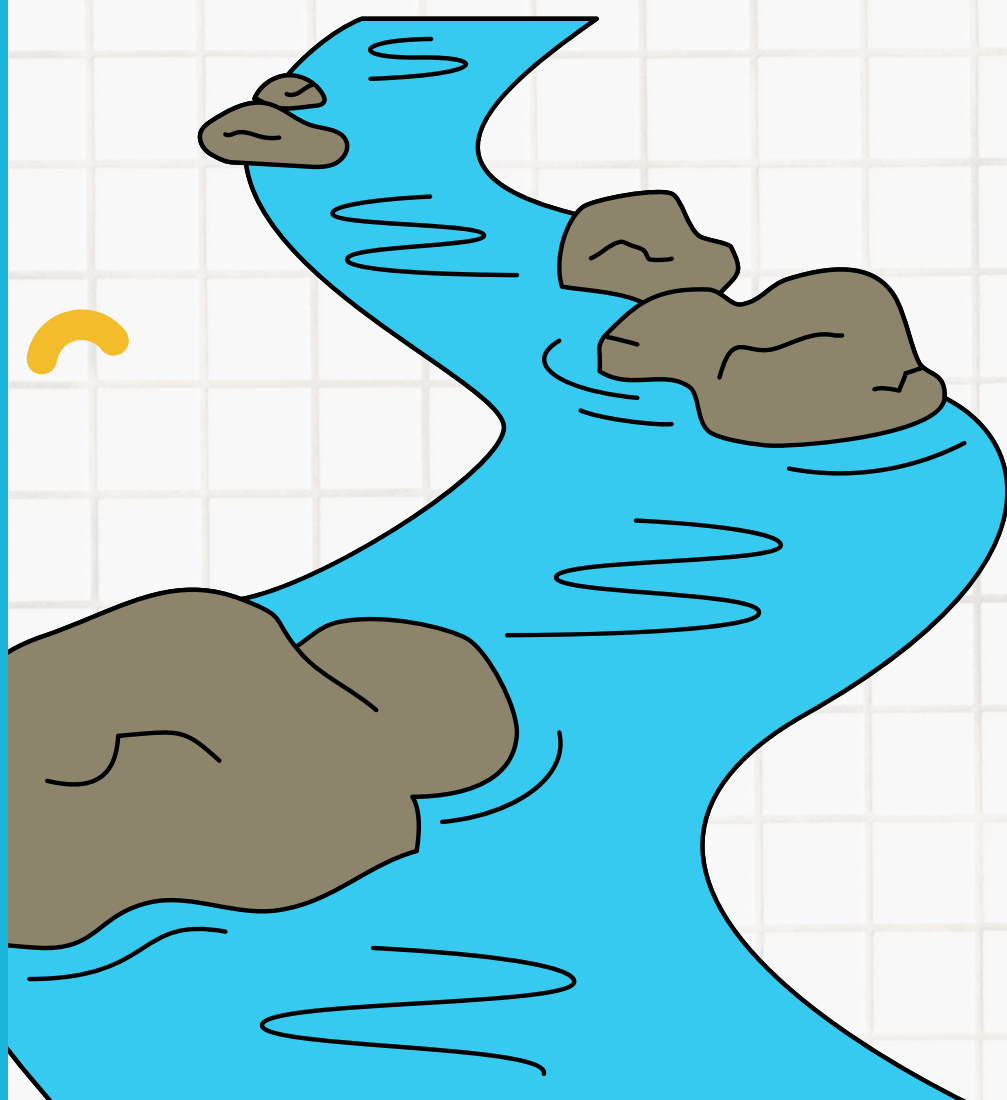
La conductivité (capacité à transmettre l'électricité) augmente vers l'aval.

Il y a plus de sels minéraux dissous dans l'eau en aval.



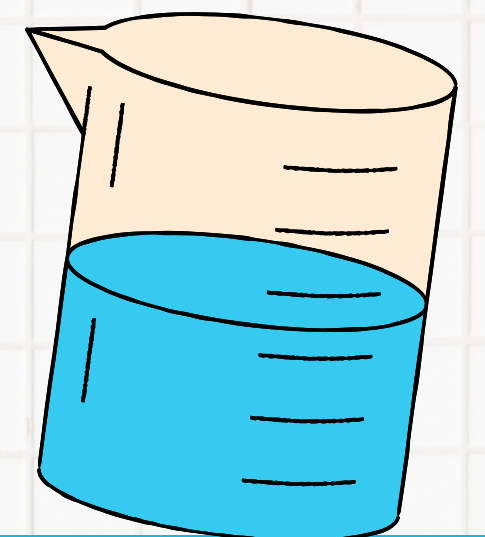
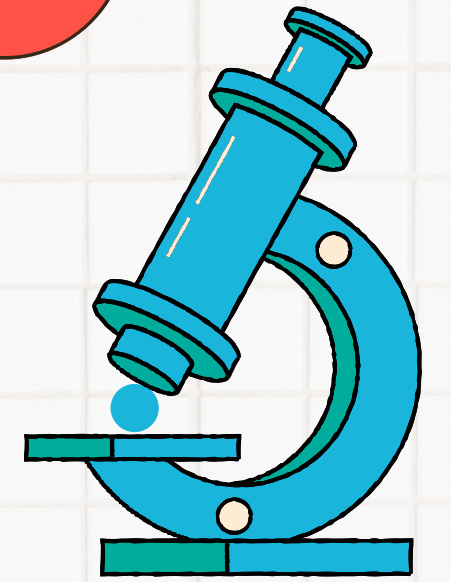
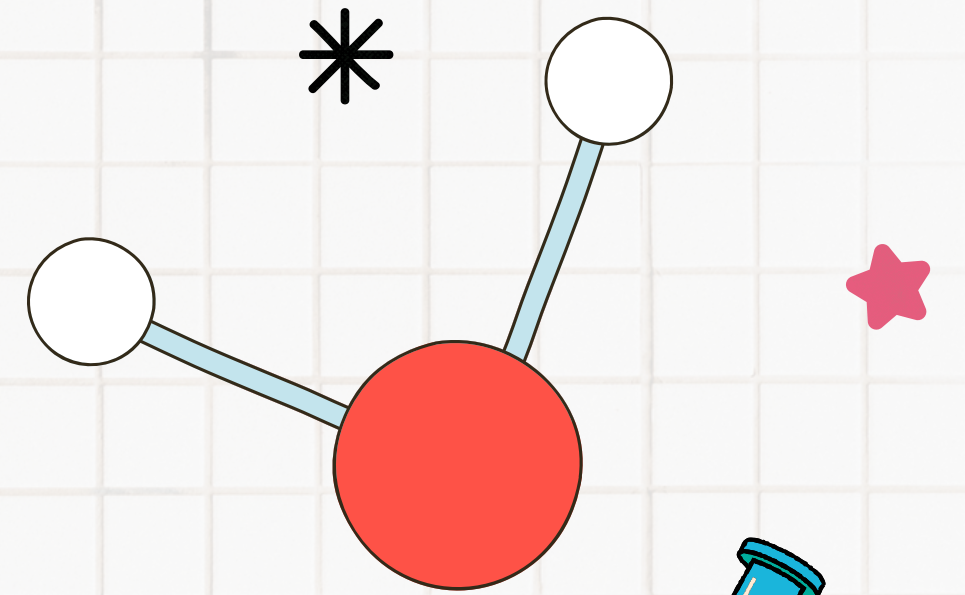
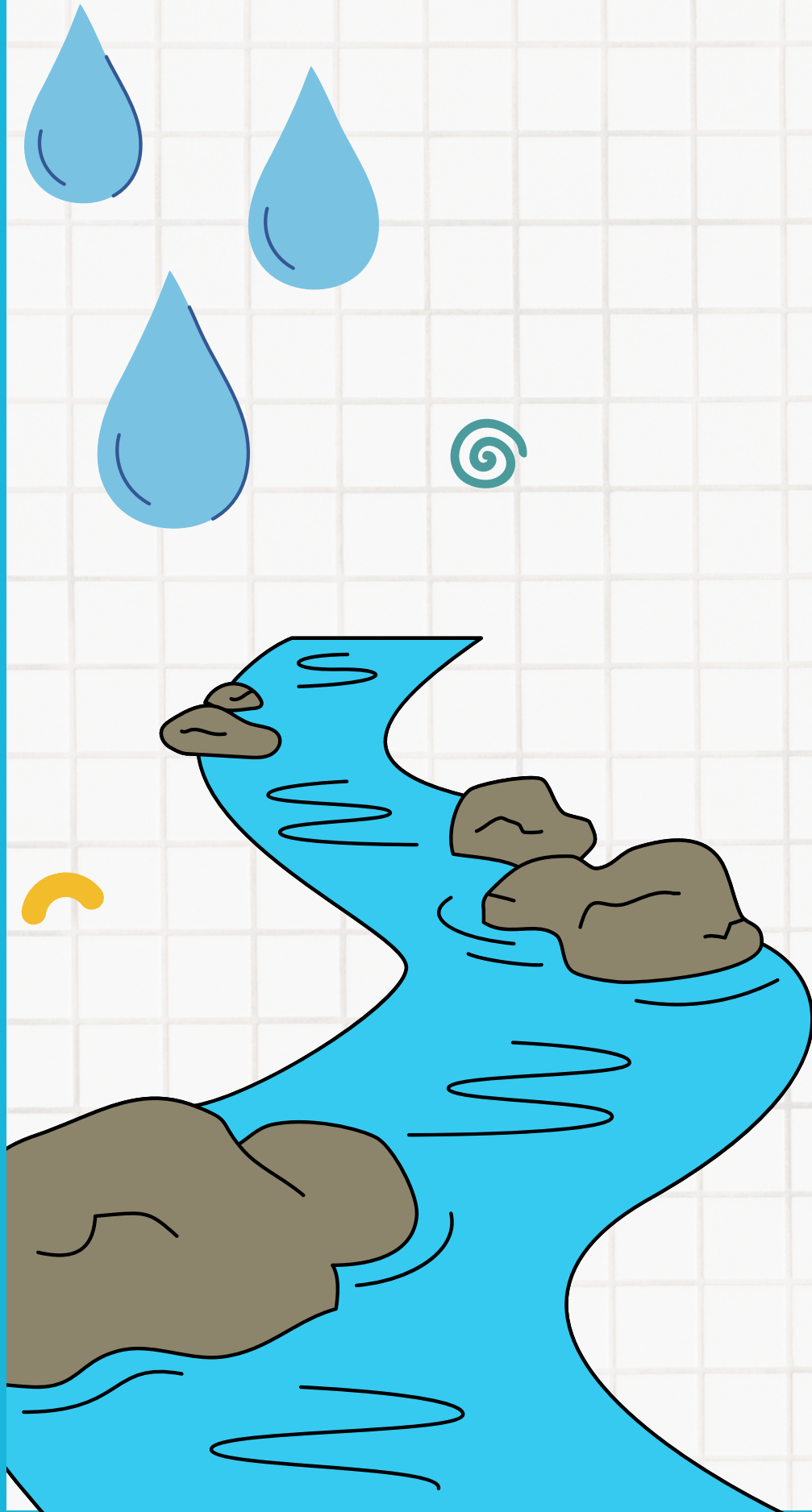
LE PH

**Le PH diminue vers l'aval
(l'eau est plus acide)**



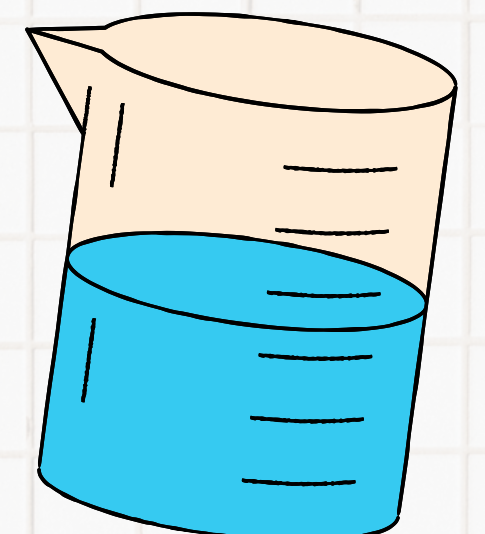
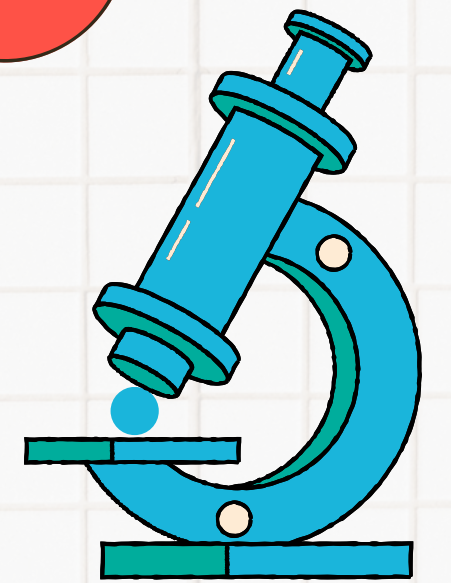
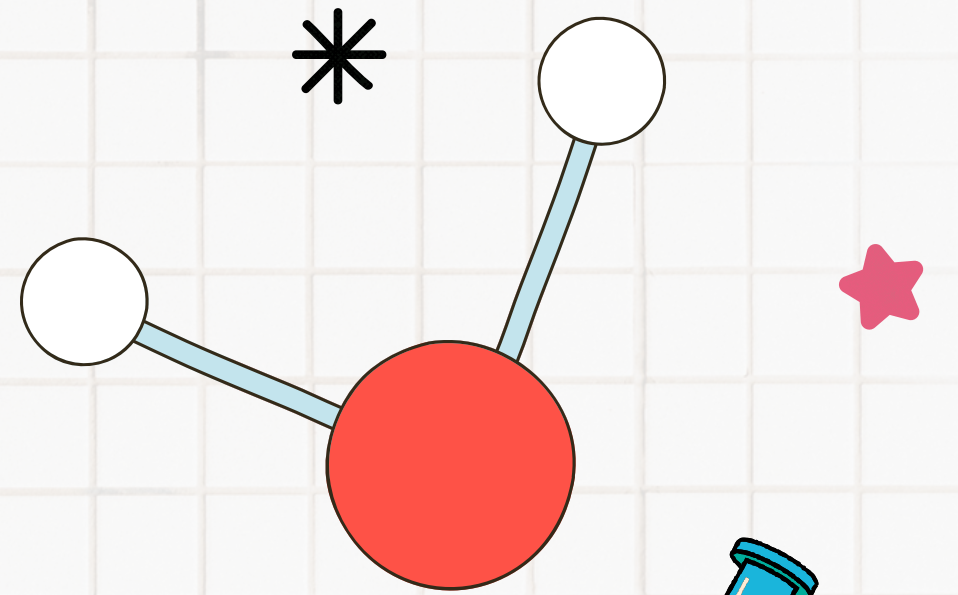
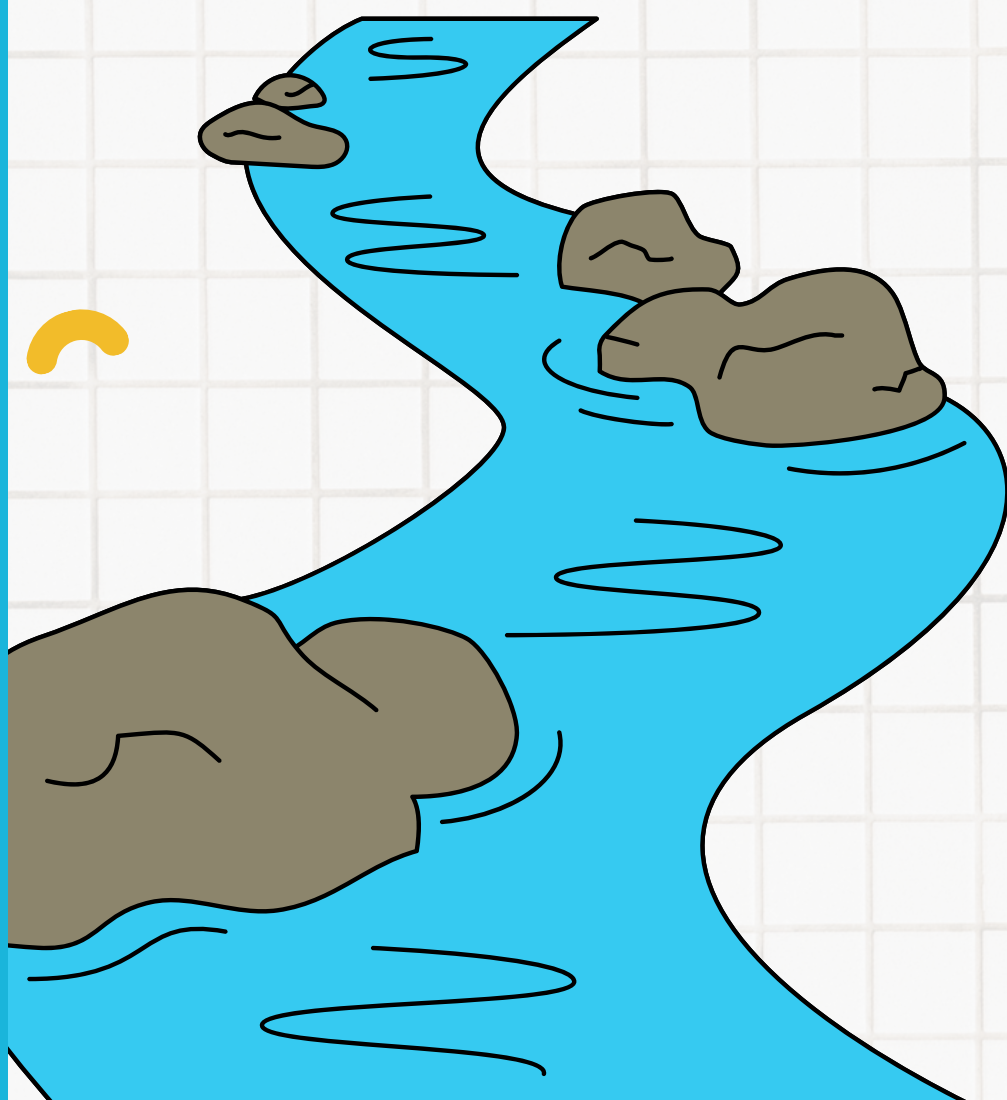
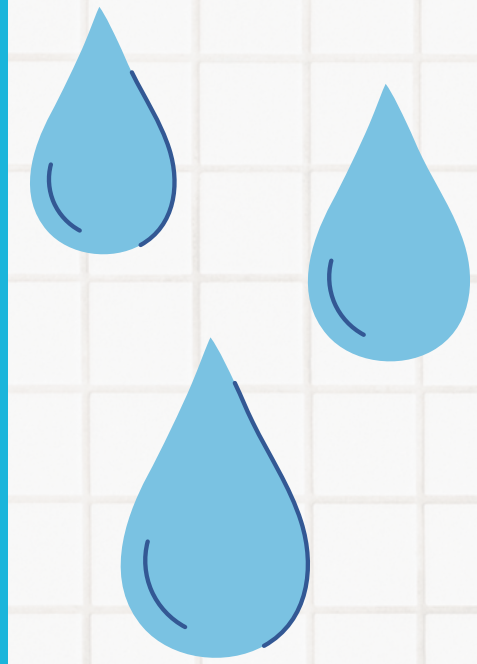
TURBIDITÉ

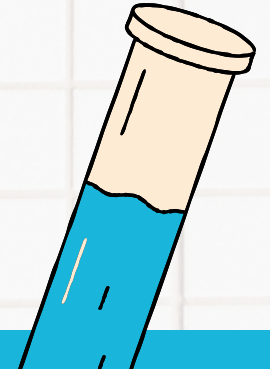
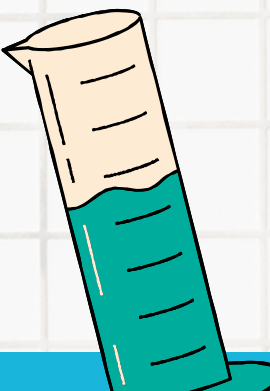
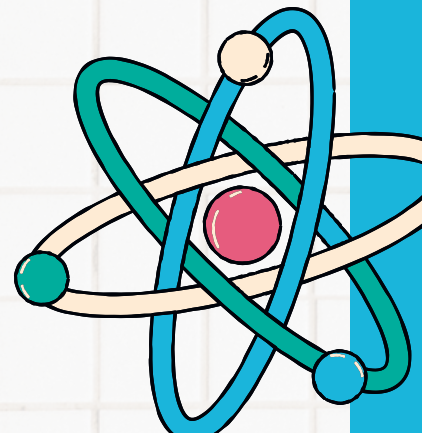
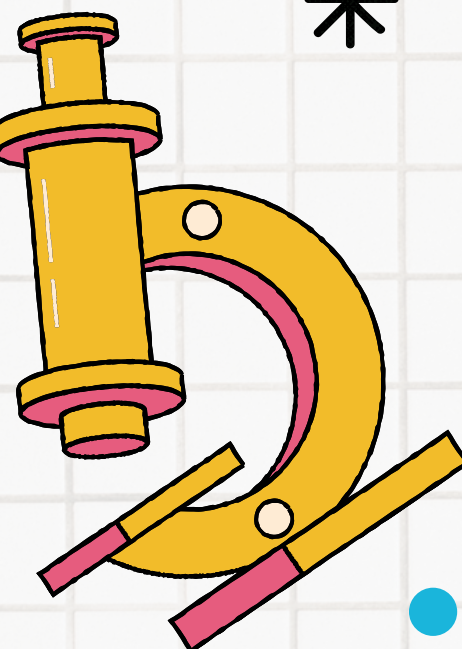
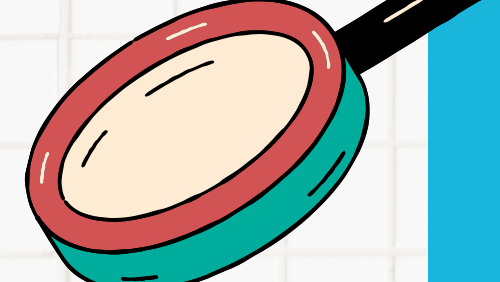
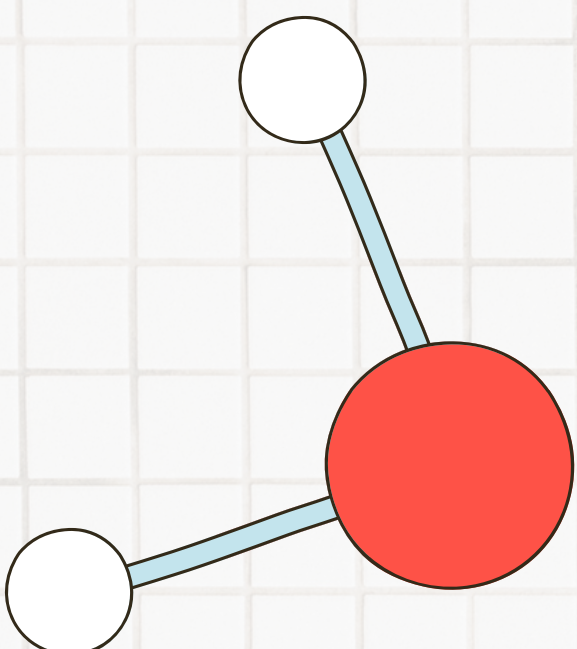
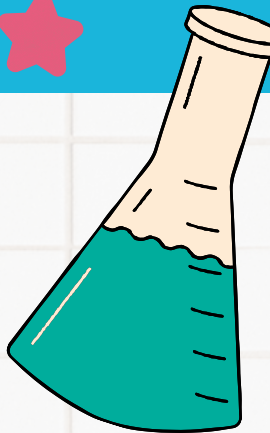
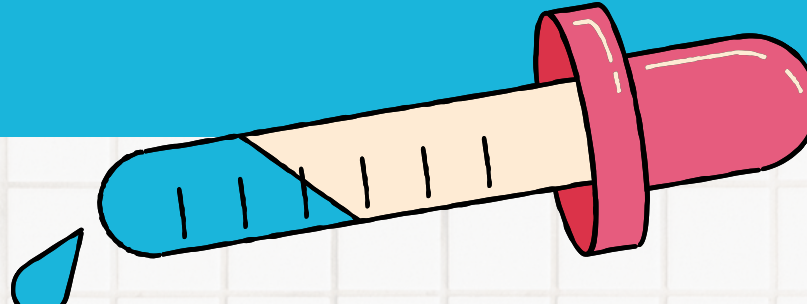

La turbidité augmente vers l'aval (l'eau est plus trouble en aval).



INDICE BIOLOGIQUE

Il y a plus de diversité et
de quantité d'espèces en
amont du cours d'eau.
L'eau est moins polluée.





**MERCI DE NOUS
AVOIR ÉCOUTÉS.
AVEZ VOUS DES
QUESTIONS?**

de Hélio et Léon